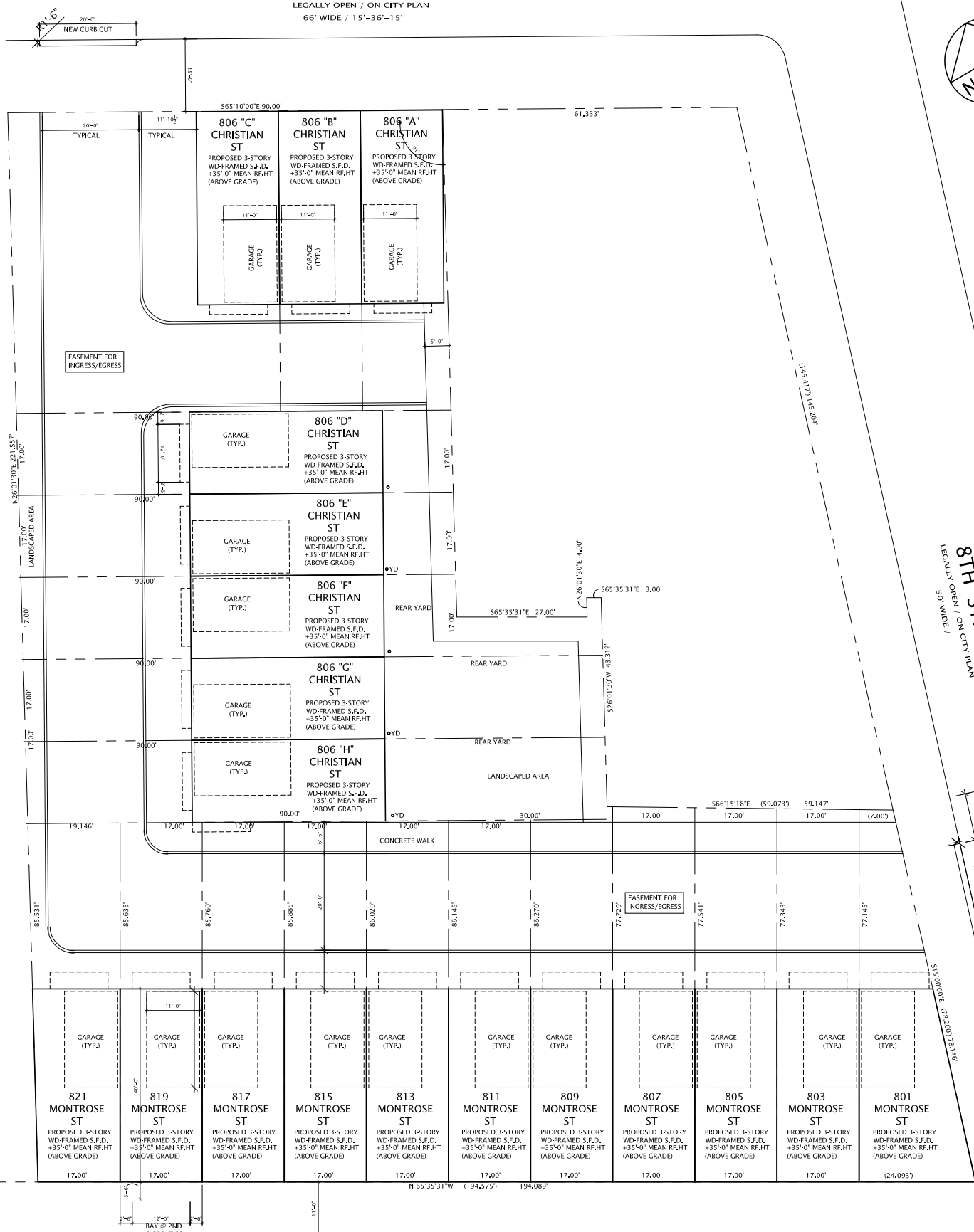


CHRISTIAN STREET
 LEGALLY OPEN / ON CITY PLAN
 66' WIDE / 15'-36'-15'



MONTROSE STREET
 LEGALLY OPEN / ON CITY PLAN
 44' WIDE / 11'-22'-11'

1 SCHEMATIC ZONING PLAN
 SK-Z1 SCALE: 1/16"=1'-0"